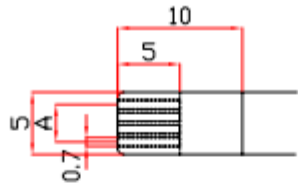
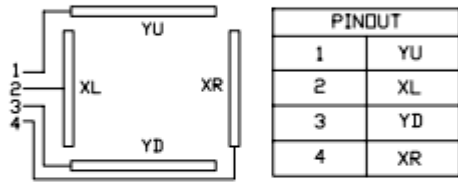


< DETAIL AA >



$A = P1.0 \times 3 = 3.0 \pm 0.15$



< Circuit Diagram >

< Remark >

Glass Thick	1.8 mm
Film Type	Non-Glare
Total Thick	2.05 ± 0.15 mm
Linearity	± 1.5 or less
Transmittance	More than 80%
Tail	FPC
General tol.	± 0.3
[Terminal Resistance]	
XL - XR	200 - 900 ohm
YU - YD	200 - 900 ohm

